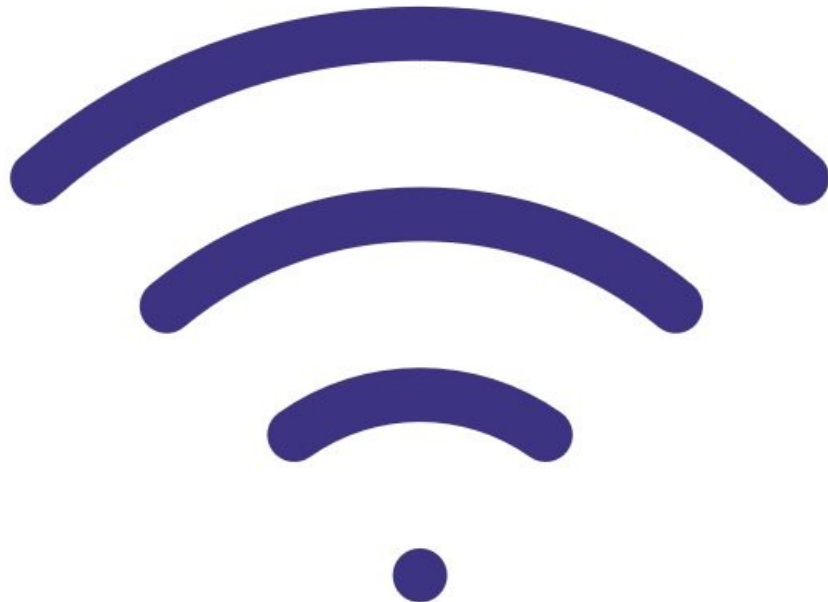




# Connect monitor to Aeroqual Cloud using office Wi-Fi

Configure your monitor so multiple users can view data using the web-based software, Aeroqual Cloud.

Written By: Tanya Taylor



## INTRODUCTION

This method of connection is for remote access, visibility of all your monitors, and remote technical support from Aeroqual. It is commonly used by engineers when they are offsite to perform routine maintenance or calibration.

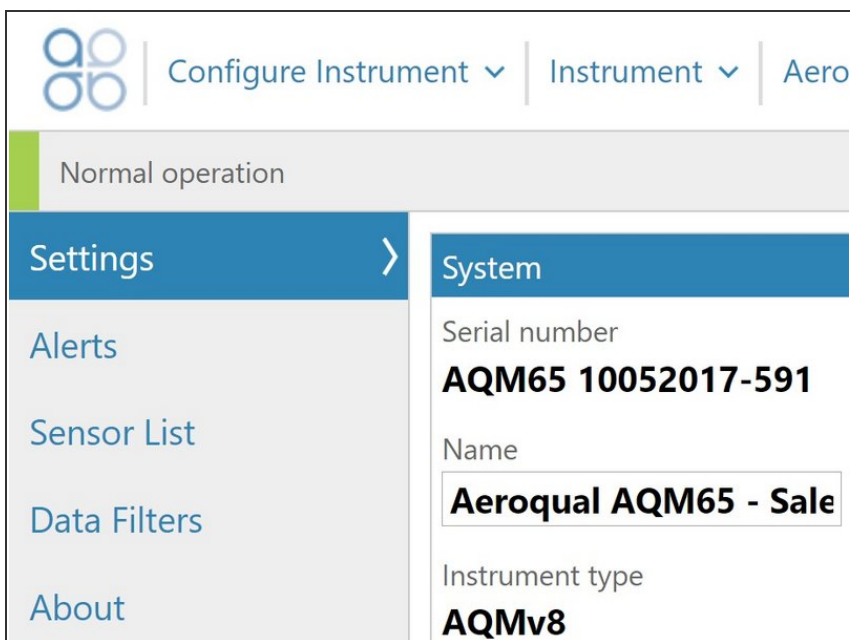
This method connects you to Aeroqual Cloud.

## Step 1 — Enter Configure app



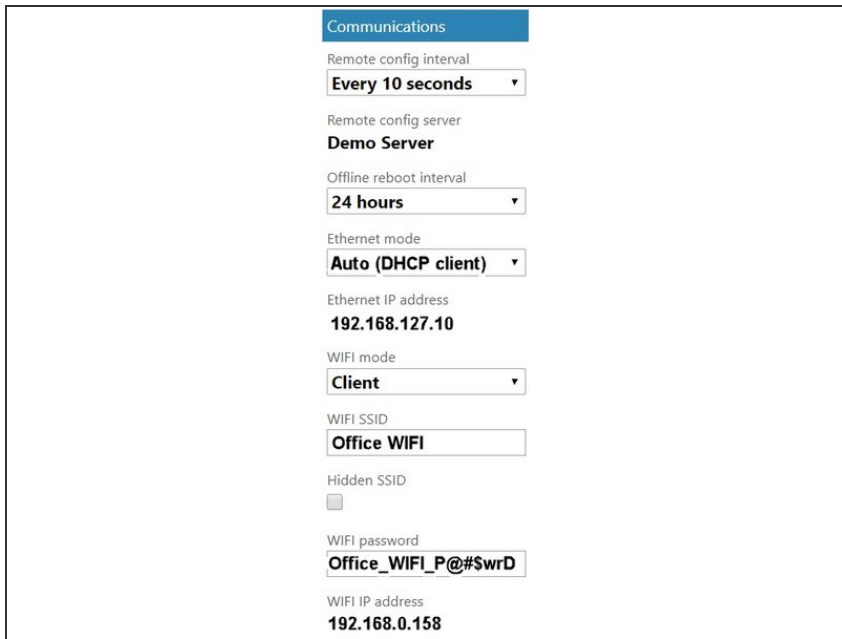
- Connect your device directly to the monitor using [Ethernet cable](#) or its [built-in Wi-Fi](#).
- From the Aeroqual Connect home screen, click **Configure**.

## Step 2 — Go to Settings



- Click **Settings** from the side menu.

## Step 3 — Change settings



**Communications**

Remote config interval  
Every 10 seconds

Remote config server  
Demo Server

Offline reboot interval  
24 hours

Ethernet mode  
Auto (DHCP client)

Ethernet IP address  
192.168.127.10

WIFI mode  
Client

WIFI SSID  
Office WIFI

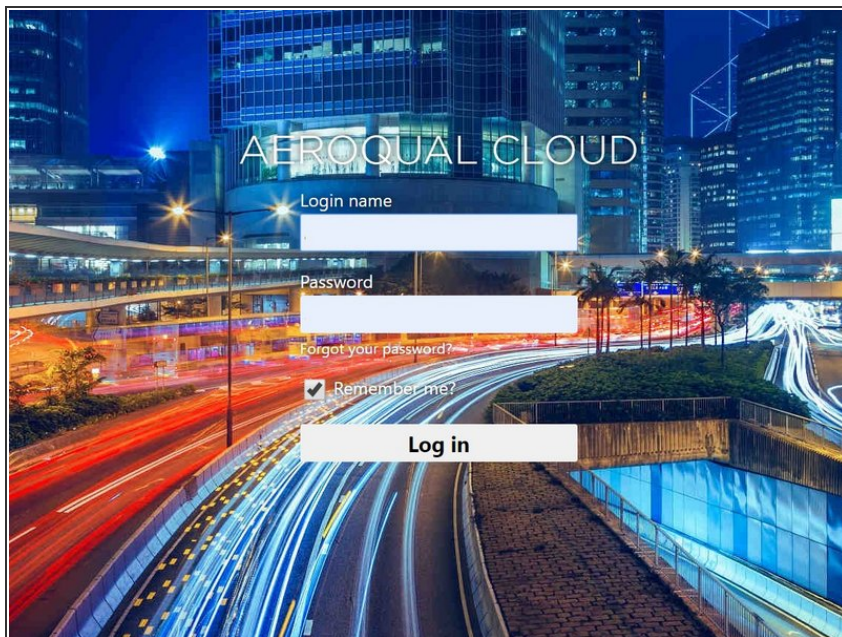
Hidden SSID  
☐

WIFI password  
Office\_WIFI\_P@#SvrD

WIFI IP address  
192.168.0.158

- Go to the **Communications** column and change the **WIFI mode** from **Access point** to **Client**.
- Manually enter the connection credentials of your office WIFI into the **WIFI SSID** and **WIFI password** fields.  
**⚠ Make sure the name is typed exactly as it appears in the list of Wi-Fi networks.**
- Click **Save**. Your device will lose its direct Wi-Fi connection to the monitor and the monitor will connect to your office Wi-Fi network.

## Step 4 — Log in to Cloud



**AEROQUAL CLOUD**

Login name  
[input field]

Password  
[input field]

[Forgot your password?](#)

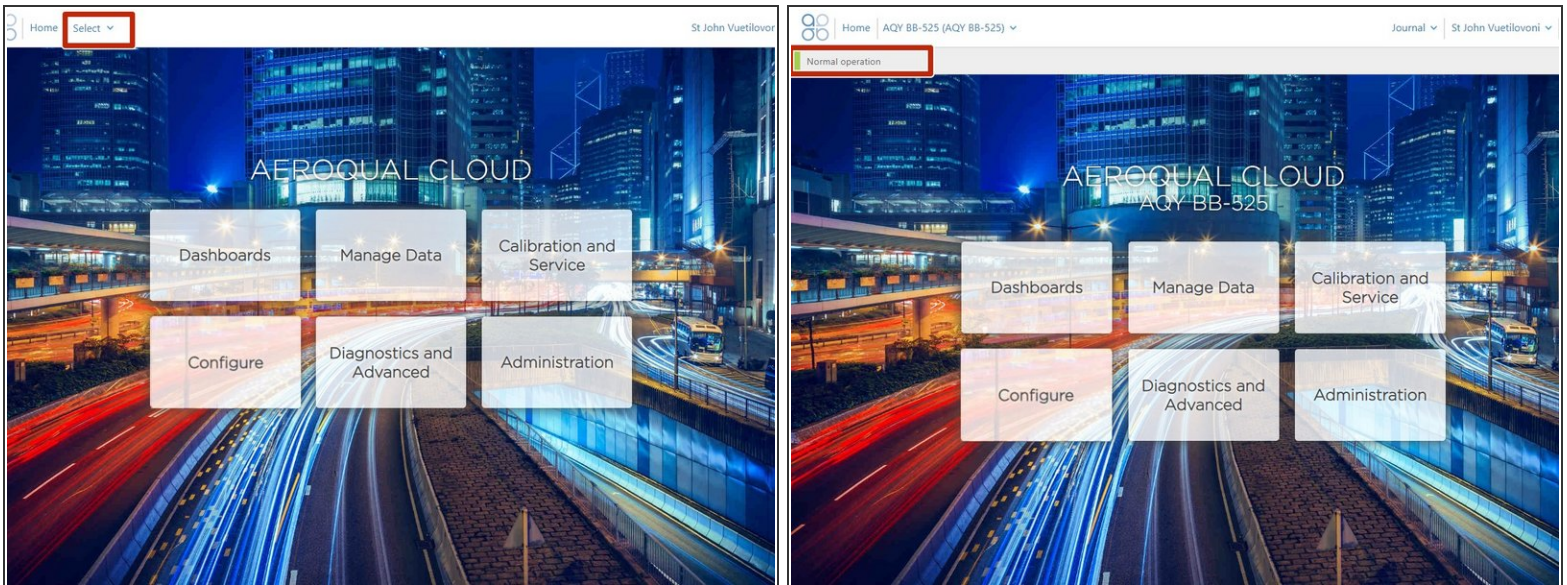
☒ Remember me?

**Log in**

- Reconnect your device to your office/lab Wi-Fi network to regain internet access.
- Open up a browser tab and go to <https://cloud.aeroqual.com>.
- Log in with your Aeroqual Cloud user credentials.
- If you don't have a login, contact [Technical Support](#).



## Step 5 — Find your monitor



- Click **Select** and [use the navigation pane to find your monitor](#).
- It should display as **Normal operation**, indicating the monitor is on and connected to the internet.
- If, after 10 minutes, your monitor doesn't appear, it's possible it hasn't connected to your Wi-Fi network, (maybe you typed the Wi-Fi name incorrectly).
- If this happens, you need to [reset the monitor's communication settings back to its factory defaults](#) and try again.

## Step 6 — Record IP address

**Communications**

Remote config interval  
**Every 10 seconds**

Remote config server  
**Demo Server**

Offline reboot interval  
**24 hours**

Ethernet mode  
**Auto (DHCP client)**

Ethernet IP address  
**192.168.127.10**

WIFI mode  
**Client**

WIFI SSID  
**Office WIFI**

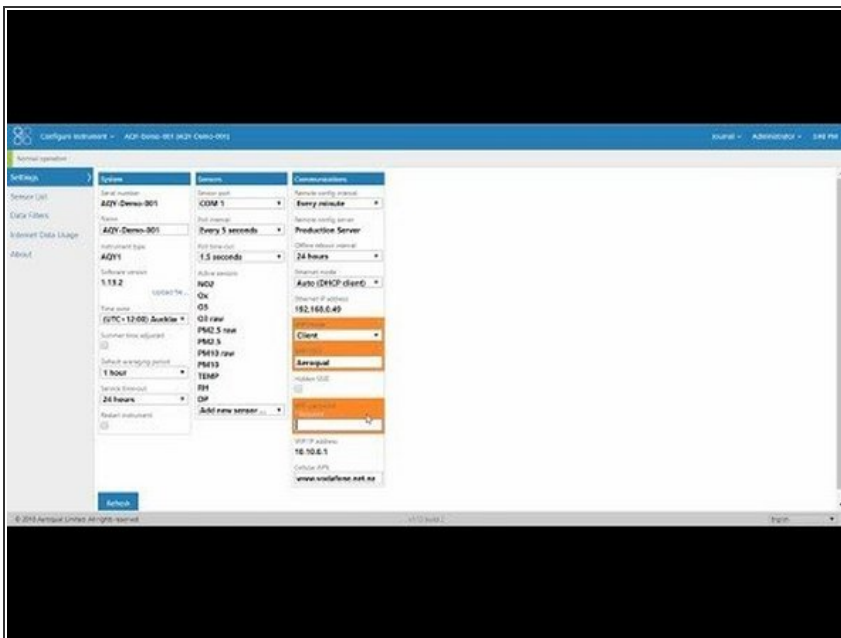
Hidden SSID  
☐

WIFI password  
**Office\_WIFI\_P@#SwrD**

WIFI IP address  
**192.168.0.158**

- To connect to your monitor using Aeroqual Connect, go to **Settings** and record the Wi-Fi IP address the router has assigned to your ePC (**WIFI IP address** field in the **Communications** column).
- If your device has access to the same LAN, type that IP address into a browser address bar.

## Step 7 — Video of steps



- To see the office Wi-Fi connection process using an AQY 1 monitor, watch this video.

For further support, contact [Technical Support](#).